

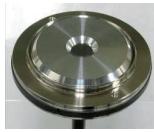
GX120 Modification

Piston – magnet holder – plate – bearing sleeve

Mandatory

OLD version:

Piston GX120 assy
Item no. 385482



Magnet holder assy
Item no. 381619



Plate GX 120 packed
Item no. 47366



Bearing sleeve GX120 kit
Item no. 384824



NOTE:

Only piston, magnet holder, plate and bearing sleeve of the new version must be fitted together!

ACHTUNG:

Es dürfen nur Kolben, Magnethalter, Platte und Lagerhülse der neuen Version miteinander verbaut werden!

REMARQUE:

Les nouvelles versions du piston, du porte-aimants, de la plaque et du manchon de palier ne doivent pas être montées en combinaison avec des versions antérieures de ces pièces!

ATTENZIONE:

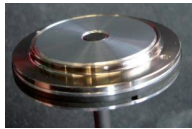
Il nuovo pistone, la nuova porta magnete, la nuova piastra e la nuova bussola cuscinetto vanno insieme, sono da utilizzare solo in combinazione quelli degli ultimi versioni!

INDICACIÓN:

Solo el pistón, el porta imán, la placa y el manguito de cojinete de la nueva versión deben ser acoplados juntos!

NEW version:

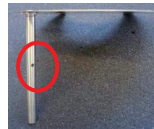
Piston GX120 packed
Item no. 406848



Magnet holder GX120
packed Item no. 406855
or Magnet holder
GX120-ME packed
Item no. 440370



Plate GX 120 packed
Item no. 368650



Bearing sleeve
GX120 kit
Item no. 368690



406854 E / 17.08.10